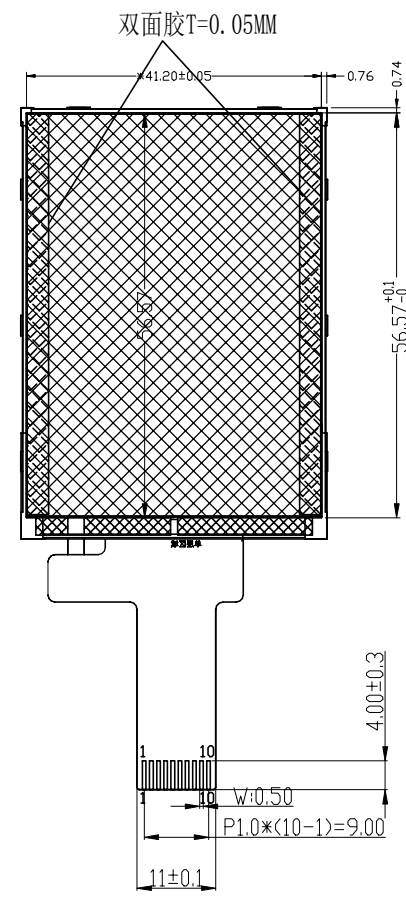
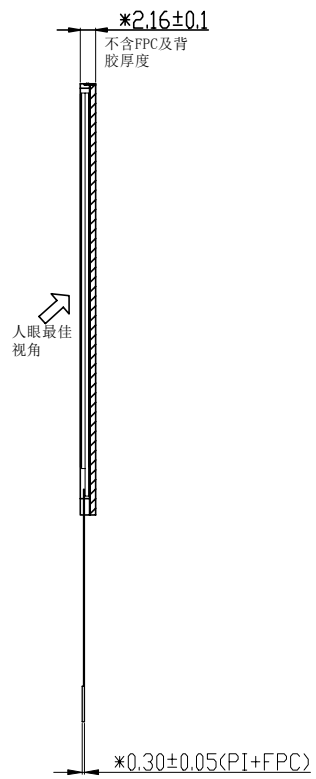
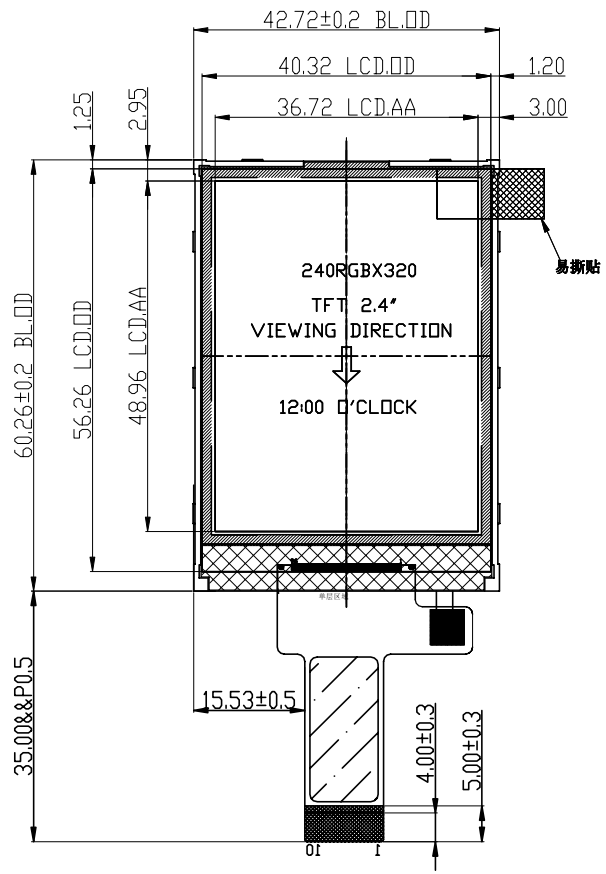


8 7 6 5 4 3 2 1

已确认此版本的所有图纸

客户签名: \_\_\_\_\_ 日期: \_\_\_\_\_

REV	DESCRIPTION	DATE
0.0	初次发行	2021-3-15



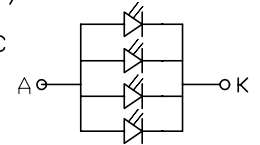
1	GND	D
2	RS	
3	CS	
4	SCL	
5	DATA	C
6	RESET	
7	VDD	
8	VSS	
9	LEDA	
10	LEDK	B

- NOTES:
1. DISPLAY TYPE: CTC 2.4 TN TFT
  2. DRIVER IC: ST7789V
  3. BACKLIGHT CIRCUIT:

LCM LUMINANCE: cd/m2 MIN ,280cd/m2 TYP

4. WHITE X/Y: 签样值±0.03 , 签样值±0.03
5. OPERATING TEMPERATURE: -20°C~70°C
6. STORAGE TEMPERATURE: -30°C~80°C

7. 偏光片: 上细砂(0.15)下光(0.13)
8. "\*"MEANS KEY DIMENSION  
"()"MEANS REFENENCED DIMENSION  
"△"MEANS REVISION RECORD



9. ROHS REQUIREMENT
10. 建议机壳开窗比LCDA.A单边大0.3-0.5mm; 泡棉开窗比LCD边缘(CF)单边至少小0.5mm.

Kingtech Group Co.,Ltd.	TITLE: ASSEMBLY	DO NOT SCALE THIS DRAWING, GENERAL TOLERANCE:±0.2		
	PART NO.:	<b>PV02412HZ10M</b>		
	DRAWN BY:	DATE:	PROJECTION:	
	CHECKED BY:	DATE:	SCALE:N.T.S	UNIT: mm
	APPROVED BY:	DATE:	SHEET: 1 OF 1	